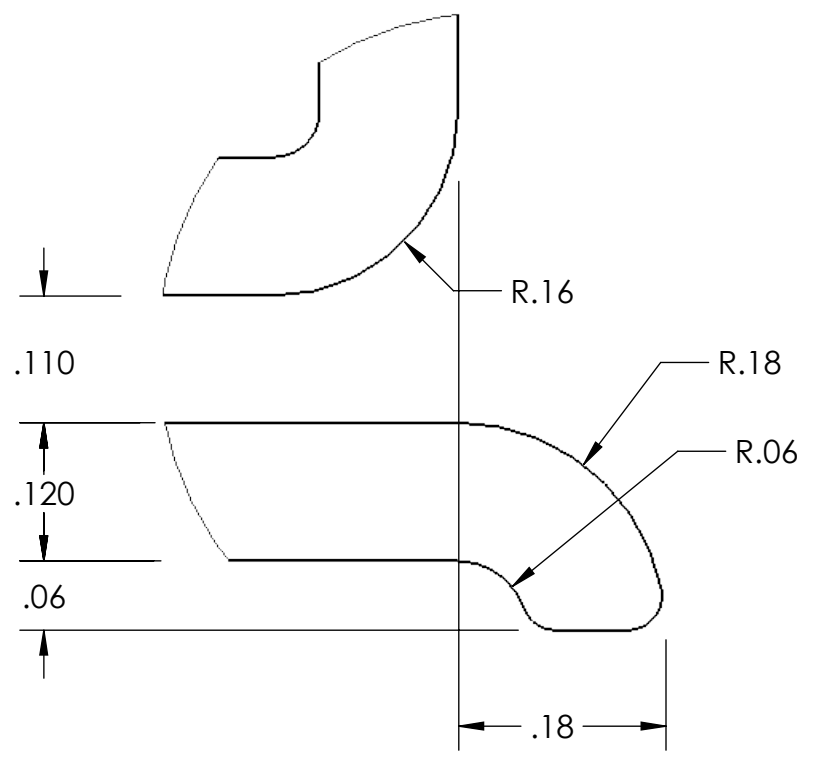
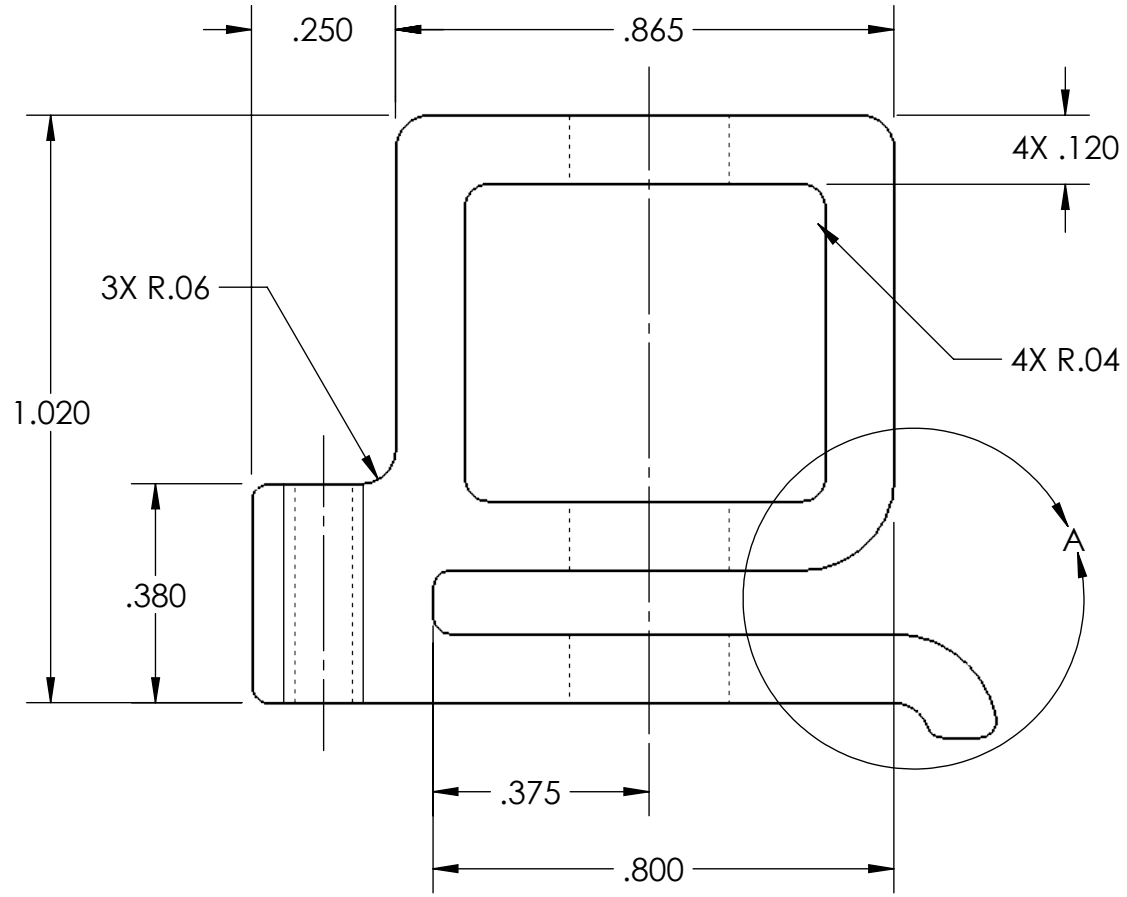
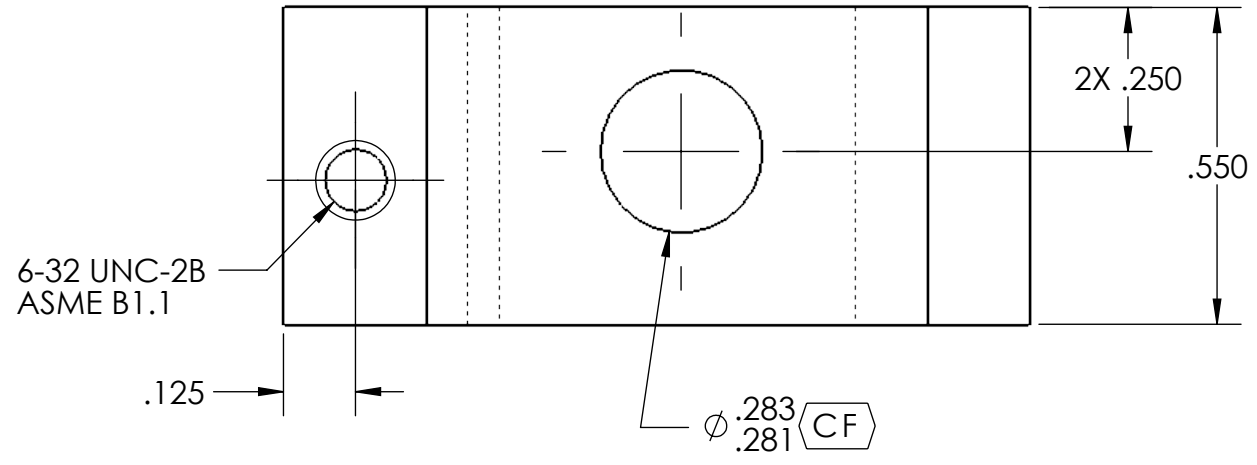


| REVISIONS | | | |
|-----------|--------------------|-----------|----------|
| REV. | DESCRIPTION | DATE | APPROVED |
| 0 | PRODUCTION RELEASE | 5/12/2022 | RJM |



DETAIL A
SCALE 6 : 1

NOTE:
 1. ALL FILLETS AND ROUNDS R.03 UNLESS OTHERWISE SPECIFIED.
 2. DEBURR FRONT AND REAR FACES.

| | | | | | |
|--|-----|-----------|------------------------------|---------|--------------|
| HENNEPIN TECHNICAL COLLEGE BROOKLYN PARK & EDEN PRAIRIE, MN | | | TITLE PUNCH HOLDER | | |
| UNLESS OTHERWISE SPECIFIED: DIMENSIONS ARE IN INCHES TOLERANCES: ANGULAR: ±.5° ONE PLACE DECIMAL: ±.03 TWO PLACE DECIMAL: ±.01 THREE PLACE DECIMAL: ±.005 FOUR PLACE DECIMAL: ±.0005 INTERPRET GEOMETRIC TOLERANCES PER ASME Y14.5-2009 | | | NAME | DATE | SIZE |
| DRAWN | QJN | 5/12/2022 | CHECKED | RJM | 5/12/2022 |
| MATERIAL SAE 1020 | | | DWG. NO. 113201 | | REV 0 |
| THIRD-ANGLE PROJECTION | | | SCALE: 3:1 | WEIGHT: | SHEET 1 OF 1 |