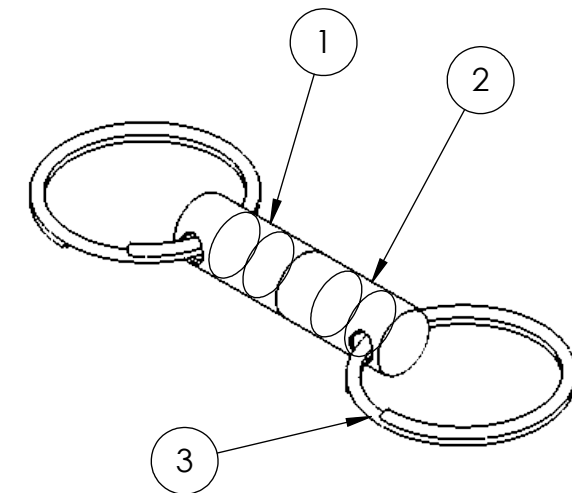
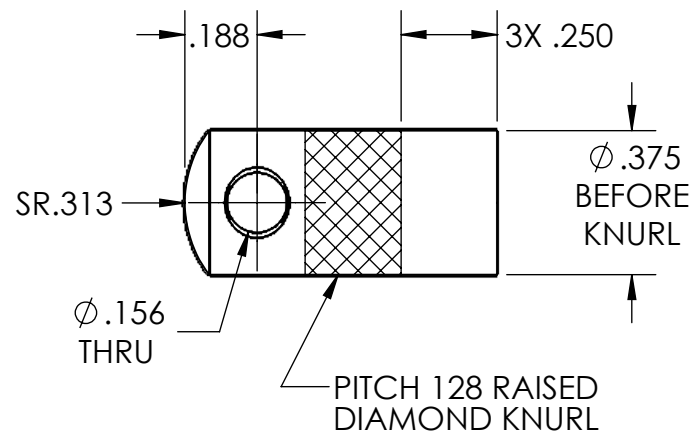
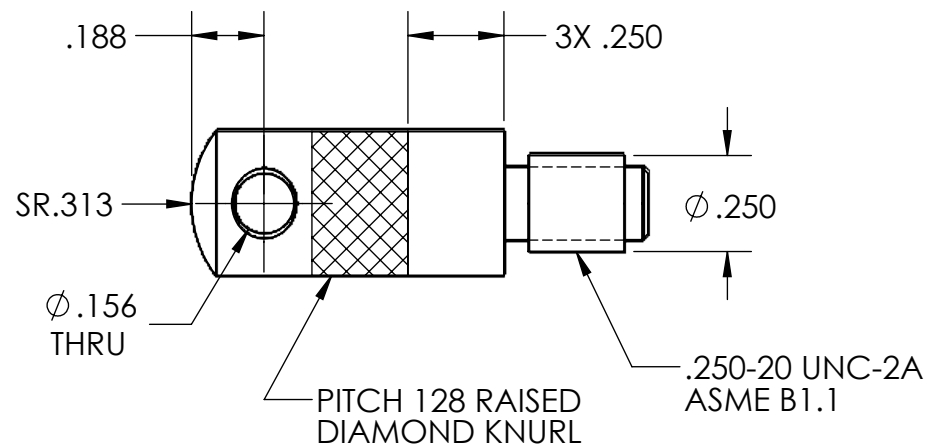
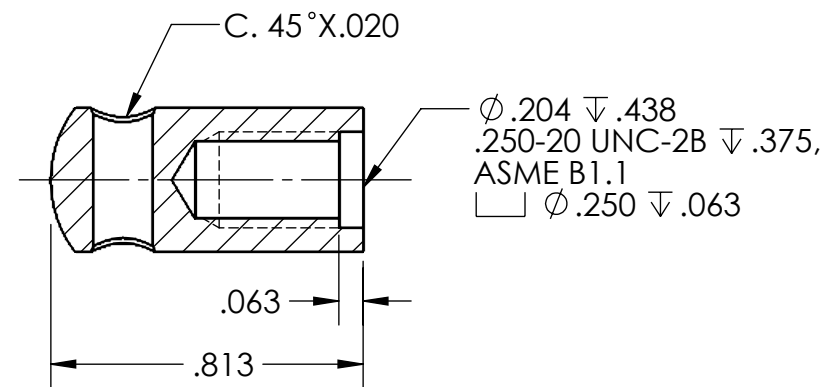
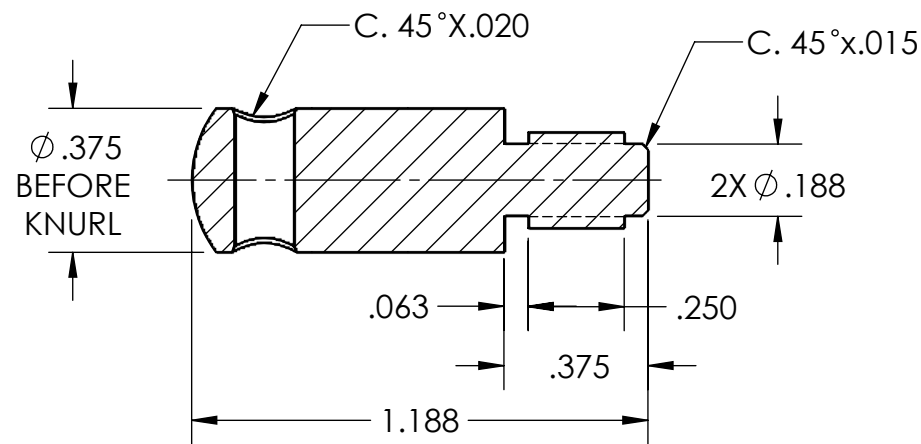


REVISIONS			
REV.	DESCRIPTION	DATE	APPROVED
0	PRODUCTION RELEASE	5/12/2022	RJM



KEY RING HOLDER A
 PART NO: 10211503A
 MATERIAL: SAE 1020
 SCALE: 2:1

KEY RING HOLDER B
 PART NO: 10211503B
 MATERIAL: SAE 1020
 SCALE: 2:1

3	10211503C	KEY RING, NO 30	2
2	10211503B	KEY RING HOLDER B	1
1	10211503A	KEY RING HOLDER A	1
ITEM NO.	PART NUMBER	DESCRIPTION	QTY.

HENNEPIN TECHNICAL COLLEGE BROOKLYN PARK & EDEN PRAIRIE, MN			TITLE KEY RING HOLDER		
UNLESS OTHERWISE SPECIFIED: DIMENSIONS ARE IN INCHES TOLERANCES: ANGULAR: $\pm .5^\circ$ ONE PLACE DECIMAL: $\pm .03$ TWO PLACE DECIMAL: $\pm .01$ THREE PLACE DECIMAL: $\pm .005$ FOUR PLACE DECIMAL: $\pm .0005$ INTERPRET GEOMETRIC TOLERANCES PER ASME Y14.5-2009			NAME	DATE	
DRAWN	QN	4/25/2022			
CHECKED	RJM	4/25/2022	SIZE	DWG. NO.	REV
MATERIAL AS NOTED			B	10211503	0
THIRD-ANGLE PROJECTION			SCALE: 2:1	WEIGHT:	SHEET 1 OF 1